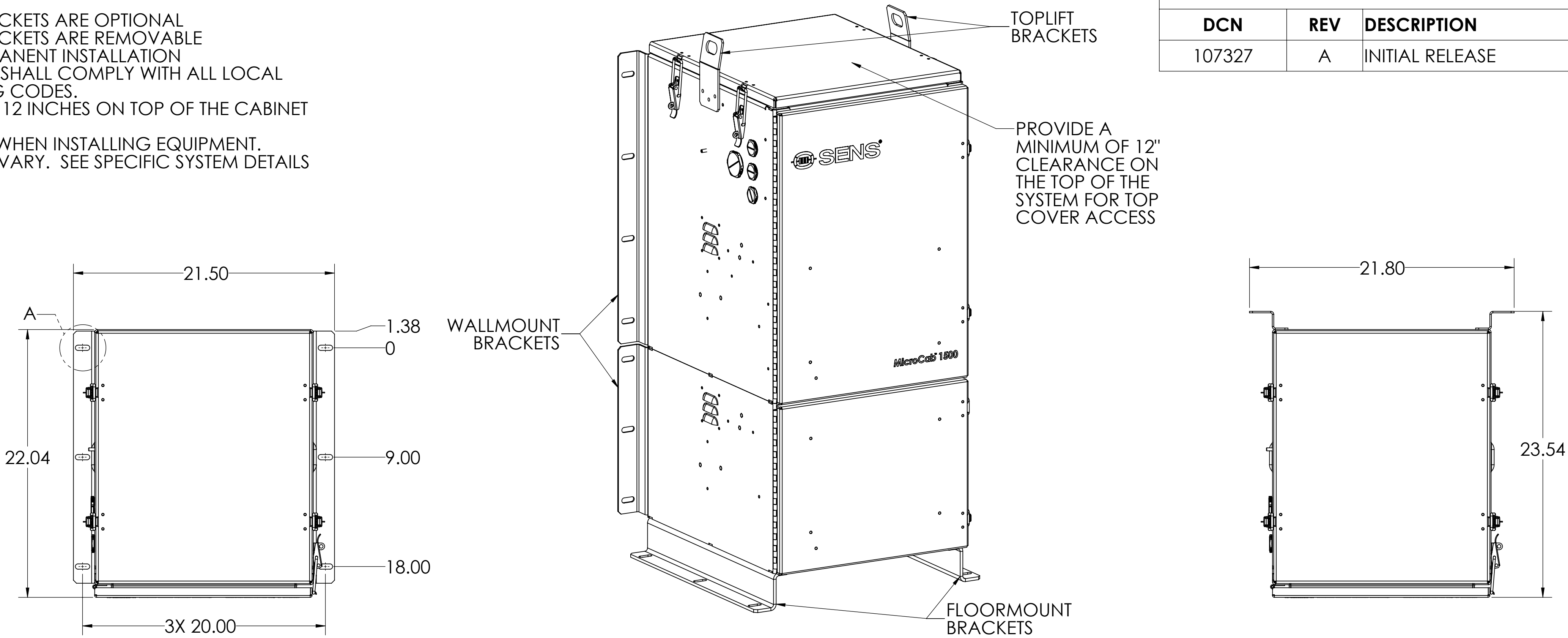
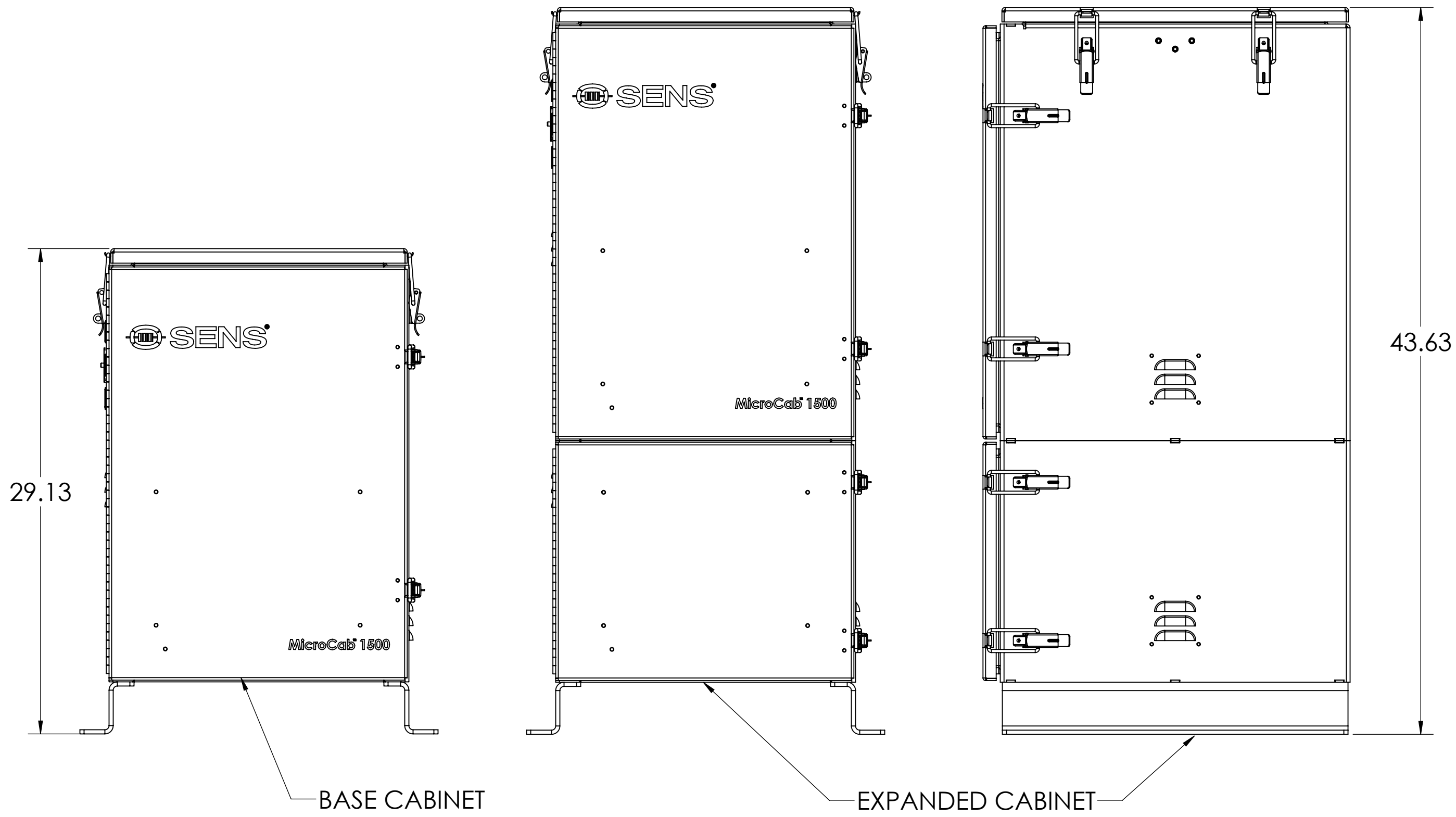
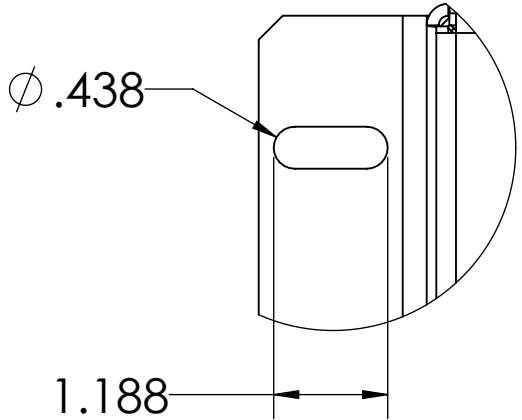


- NOTES:
1. WALLMOUNT AND FLOORMOUNT BRACKETS ARE OPTIONAL
  2. WALLMOUNT AND FLOORMOUNT BRACKETS ARE REMOVABLE
  3. TOPLIFT BRACKETS ARE NOT FOR PERMANENT INSTALLATION
  4. THE INSTALLATION OF THIS EQUIPMENT SHALL COMPLY WITH ALL LOCAL AUTHORITY AND APPLICABLE BUILDING CODES.
  5. PROVIDE A MINIMUM CLEARANCE OF 12 INCHES ON TOP OF THE CABINET FOR TOP COVER ACCESS.
  6. USE ALL PROVIDED MOUNTING SLOTS WHEN INSTALLING EQUIPMENT.
  7. HEIGHT AND WEIGHT OF SYSTEM MAY VARY. SEE SPECIFIC SYSTEM DETAILS

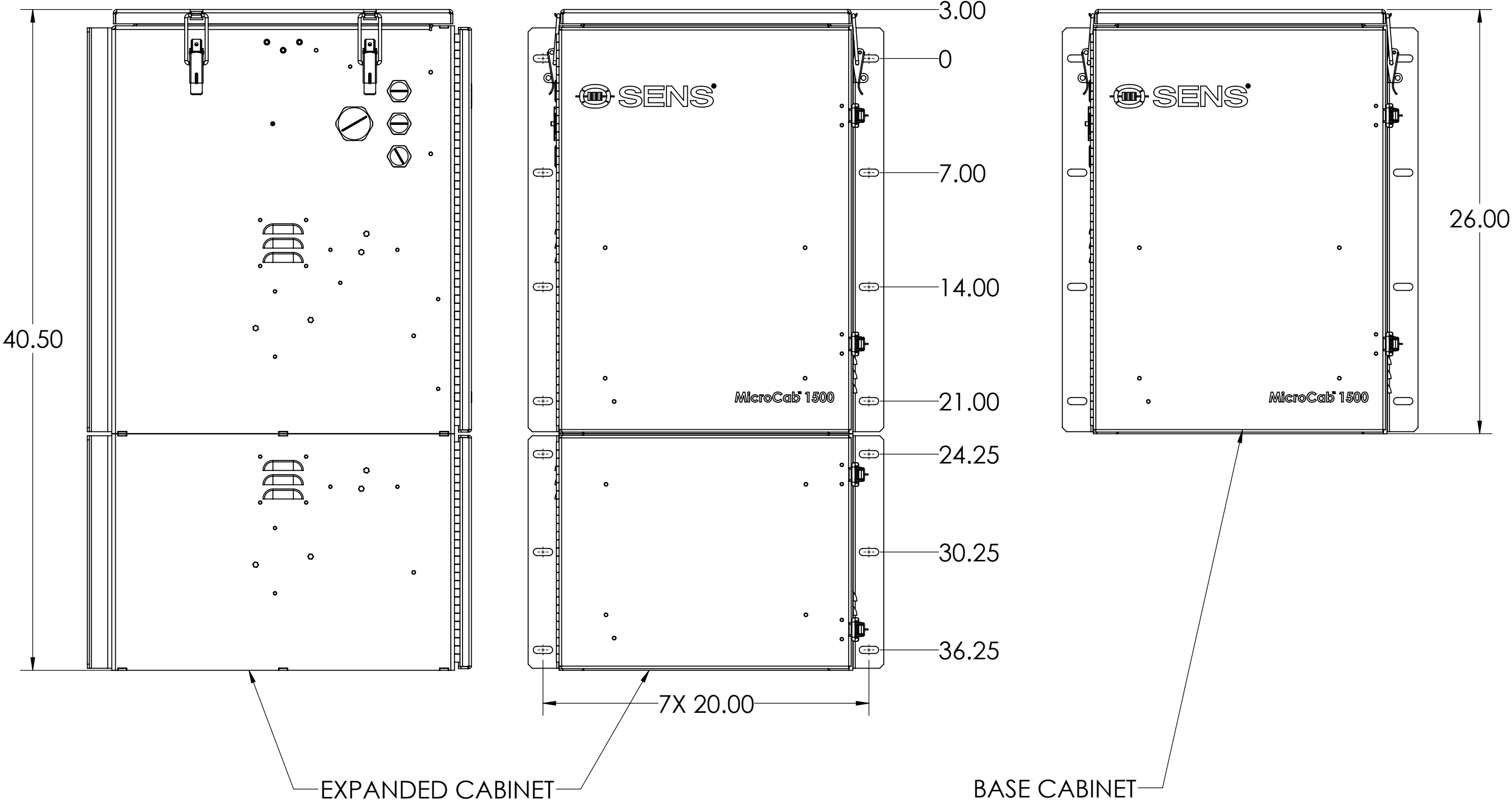
REVISIONS				
DCN	REV	DESCRIPTION	DATE	APPROVED
107327	A	INITIAL RELEASE	7/26/2017	SC



DETAIL A  
MOUNTING SLOT DETAIL  
SLOTS FOR 3/8 INCH (M10) HARDWARE



FLOORMOUNT



WALLMOUNT



1540 INDUSTRIAL CIRCLE  
LONGMONT, CO 80501  
303-478-7500  
WWW.SENS-USA.COM  
PROPRIETARY AND CONFIDENTIAL  
THE INFORMATION CONTAINED IN THIS DRAWING IS THE SOLE  
PROPERTY OF STORED ENERGY SYSTEMS, LLC. ANY  
REPRODUCTION IN PART OR AS A WHOLE WITHOUT THE WRITTEN  
PERMISSION OF STORED ENERGY SYSTEMS, LLC IS PROHIBITED.

UNLESS OTHERWISE SPECIFIED:  
DIMENSIONS ARE IN INCHES  
DEFAULT TOLERANCES:  
ANGLES  $\pm 1^\circ$   
TWO PLACE DECIMAL  $\pm .02$   
THREE PLACE DECIMAL  $\pm .005$   
DO NOT SCALE DRAWING

NAME	DATE	DESCRIPTION	
DRAWN	ERS	7/26/2017	2DCAD,MC,STANDARD
CHECKED			
THIRD ANGLE PROJECTION		SIZE	DOCUMENT NUMBER
		D	2DCAD-MC-STD
		REV	
		A	
		SHEET 1 OF 1	